

## Parcel Pro Locker

Advanced interactive package management designed for modern businesses, campuses, and residential communities. Secure, efficient, and accessible 24/7/365.



### Secure

Advanced security features protect valuable packages



### 24/7 Access

Package retrieval on your schedule schedule



### Versatile

Perfect for businesses, campuses and residential communities



# About Kiosk Operators

## Industry Leader

Global leader in smart smart locker technology technology with 30+ years of expertise. Our Our innovations have established the benchmark for modern modern package management systems. systems.

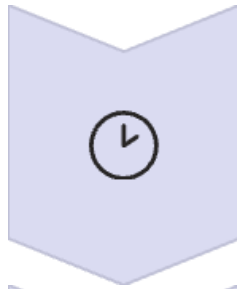
## Specialized Expertise

We optimize package package handling across across residential, corporate, and educational sectors. Our Our tailored systems effectively address unique industry challenges.

## Client-Focused Approach

We provide rapid deployment, seamless seamless integration, robust security, and exceptional service.

# Benefits of Parcel Pro Locker System



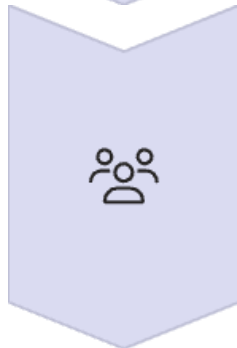
## **24/7/365 Accessibility**

Packages available anytime, eliminating missed deliveries and providing complete schedule flexibility for recipients.



## **Enhanced Security**

Prevents theft and loss through secure individual compartments with authorized-only access, protecting both packages and premises.



## **Staff Optimization**

Automates delivery and pickup processes, freeing staff from package management duties and eliminating the need for dedicated for dedicated personnel.

Parcel Pro Locker transforms package handling from a burden into an amenity. Recipients gain convenience and security while property managers enjoy operational efficiency and reduced liability.

# Modular Customizable Configuration

Start with your foundational model and develop or expand your solution based on business needs.



## Modular Design

Our modular design philosophy ensures that that your Parcel Pro Locker system can evolve alongside your changing needs.



## Scalable Solution

Whether you're starting with a basic configuration or implementing a comprehensive enterprise solution, our system scales effortlessly.

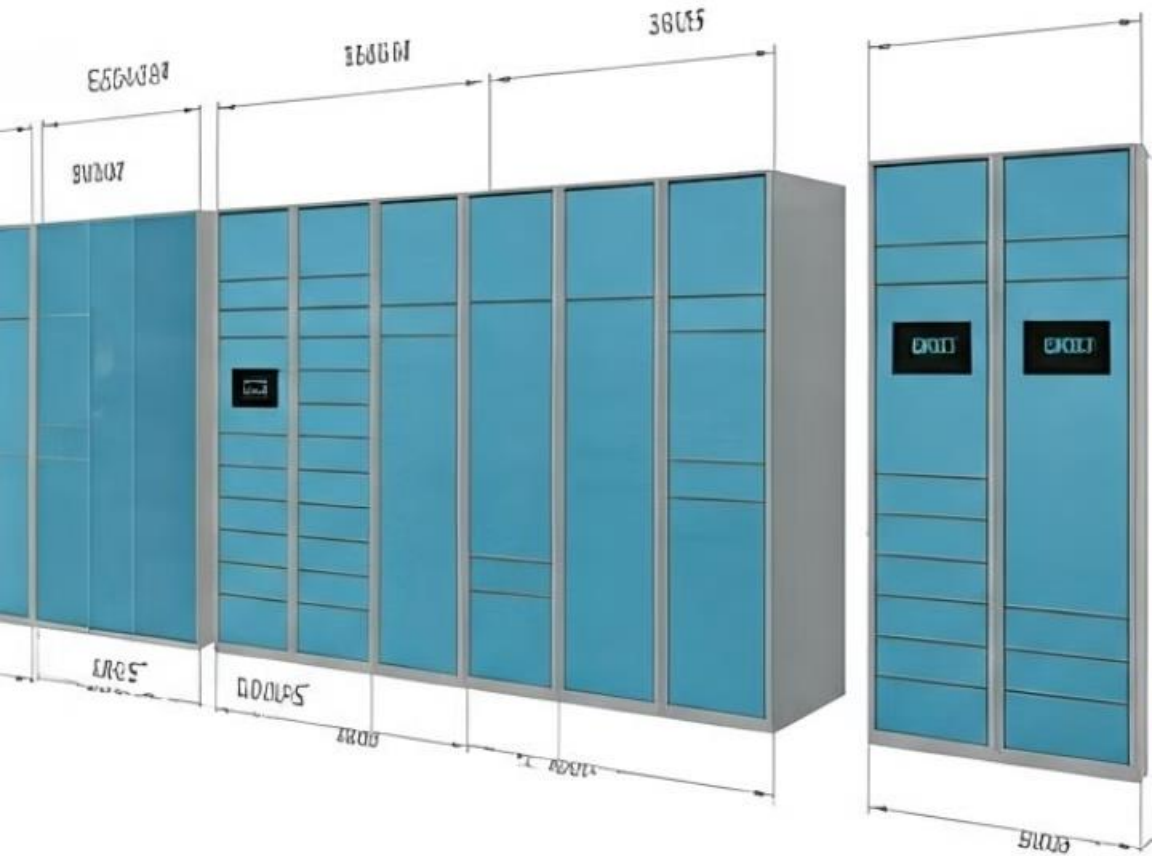


## Seamless Integration

Each component is engineered for seamless integration, allowing for future additions without disrupting existing operations.

This approach provides maximum flexibility while protecting your initial investment as your requirements change over time.

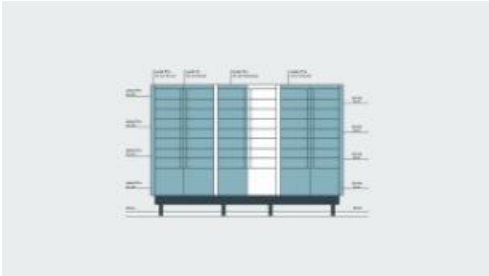
# Locker Dimensions



Model	Description	Width	Height	Depth
PP-S-013-A	Starter (13 cabinets)	62"	78"	24"
PP-A-016-A	Adder (16 cabinets)	69"	78"	24"
PP-A-006-A	XL Adder (6 cabinets)	42"	78"	24"
PP-A-004-A	Oversized Adder (4 cabinets)	38"	78"	30"

Parcel Pro Locker configurations accommodate various space requirements and package volumes. All models maintain a consistent 78" height while width varies based on compartment quantity and specific needs.

Standard models feature 24" depth for typical packages, while oversized units offer 30" depth for larger parcels. Each unit maximizes space efficiency without sacrificing accessibility.



# Cabinet Recommendations

We recommend starting with a 3:1 ratio of units to cabinets for optimal efficiency. Our modular design allows for easy expansion as demand increases.



## Small Cabinets

30% of total configuration



## Medium Cabinets

50% of total configuration



## Large Cabinets

12% of total configuration



## Extra Large Cabinets

8% of total configuration

This recommended distribution is based on extensive analysis of typical package delivery patterns across various sectors. Medium-sized cabinets sized cabinets accommodate the majority of standard deliveries, while maintaining an appropriate number of small compartments for letters and slim for letters and slim packages ensures maximum system efficiency.

The allocation for large and extra-large compartments addresses the growing trend of oversized e-commerce deliveries without dedicating excessive space to less common package dimensions.

# Contactless Delivery Process



## Courier Entry

Delivery person enters unique code and recipient information on information on the built-in scanner.



## Locker Selection

Courier selects appropriate locker locker size, and the door opens opens automatically for package package placement.



## Automatic Notification

System sends immediate notification to recipient via email or text message.



## Secure Pickup

Recipient scans QR code or enters enters pin for contactless package package retrieval.

Our streamlined delivery process eliminates traditional pain points by removing the need for face-to-face interactions while maintaining secure chain maintaining secure chain of custody. The intuitive interface guides couriers through each step, minimizing training requirements and ensuring and ensuring consistent operation across all delivery services.

# Locker Features



## Durable Construction

Premium steel cabinets designed for high-traffic environments with quality locking mechanisms. Our units are built to withstand years of continuous use with minimal maintenance, featuring scratch-resistant finishes and reinforced hinges.



## Smart Technology

Built-in cameras, sensors, and connectivity options for seamless package management. Each unit includes advanced IoT capabilities that provide real-time system monitoring, usage analytics, and proactive maintenance alerts.



## Digital Interface

User-friendly touchscreen with intuitive controls makes operation simple for all users. The high-resolution display offers multilingual support and clear visual guidance to streamline both delivery and pickup processes.



## Accessibility Features

ADA-compliant design ensures all users can easily access and operate the system. Features include appropriate height placement of the interface, voice guidance options, and tactile indicators for visually impaired users.



# Standard & Premium Features

Our tiered feature approach allows clients to select the configuration that best matches their specific needs and budget requirements.

## Included in Base Package

- 10" Touchscreen Interface
- Standard Steel Construction
- Basic Notification System
- Cloud-Based Management
- 1-Year Standard Warranty

## Optional Upgrades

- Temperature-Controlled Compartments
- Extended Warranty Coverage
- Advanced Security Camera Integration
- Custom Branding Options
- Mobile App Enhancement Package

The robust base package provides all essential functionality for effective package management, while premium options offer enhanced capabilities for specialized applications or premium environments.

Temperature-controlled compartments are particularly valuable for properties receiving perishable deliveries like groceries or pharmaceuticals, while advanced security features provide additional peace of mind in high-traffic or urban environments.

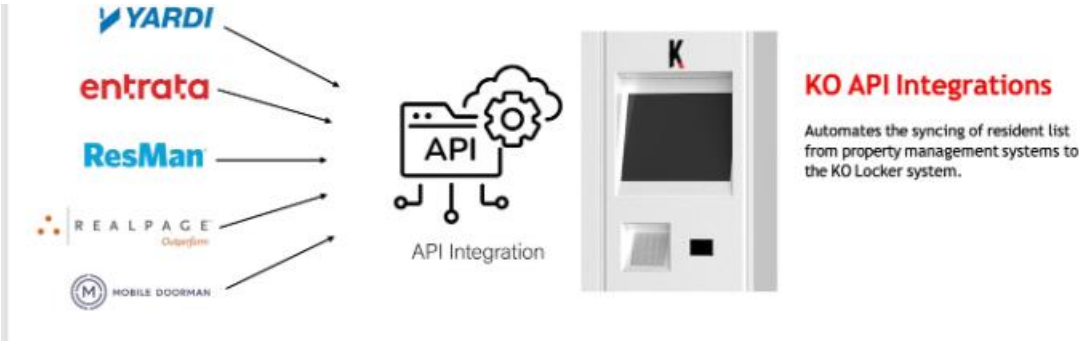
# Software Integration Capabilities

Our system offers complete software integration with secure APIs, connects with industry-leading platforms, and provides customizable solutions that scale with your business needs.

## API Integration Partners

Our system seamlessly connects with leading industry platforms through secure API integration, ensuring compatibility with your existing technology ecosystem.

Our flexible API software integrates seamlessly with leading property management systems. The KO API automatically syncs resident lists and streamlines system administration, reducing manual data entry and ensuring accurate user records.



## Seamless Experience

End-to-end solution for users and administrators



## Full API Integration

Connect with existing property management systems



## Customization Options

Tailored solutions for your specific workflow needs



## Robust Security Platform

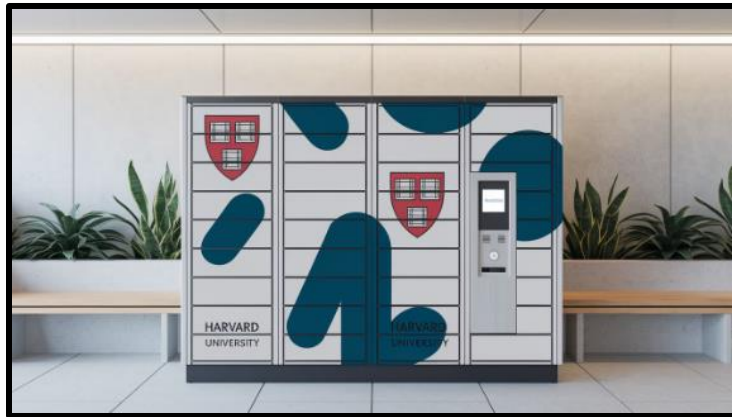
Encrypted data exchange and access control

# Design Customization Options



## Premium RAL Selection

Access to over 2,250 color options for perfect brand matching and visual and visual integration. This extensive palette ensures precise color alignment with your corporate identity or interior design scheme.



## Custom Wraps

Full graphic wraps featuring your branding, artwork, or marketing marketing messages. These high-resolution, durable finishes transform transform the lockers into engaging visual elements that reinforce your reinforce your brand identity.



## Standard Colors

Choose from Traffic White, Brown-Grey, Stone Grey, or Jet Black for a Black for a timeless look. These classic options provide a neutral neutral aesthetic that integrates seamlessly with most architectural architectural environments.

# Custom Design & Branding



## Initial Consultation

Identify design goals and requirements



## Concept Development

Create custom design proposals



## Visualization

3D rendering of your branded solution



## Production

Manufacturing with premium materials

Our design team works with you to create lockers that enhance your brand identity and complement your space's aesthetic. Through a collaborative process, we develop solutions that function not just as package management systems but as integrated design elements that contribute positively to your environment's overall look and feel.

From subtle branding touches to bold statement pieces, we can execute your vision with precision while maintaining the durability and functionality that our systems are known for.

# Contact Kiosk Operators Today



Partner with us to revolutionize your package management. Our team is ready to develop a customized solution for your specific needs.



## Website

[www.kioskoperators.com](http://www.kioskoperators.com)



## Phone

+1 (466) 505-0663



## Email

[sales@kioskoperators.com](mailto:sales@kioskoperators.com)

Ready to elevate your package management experience? Contact our consultants today for consultants today for a personalized demonstration and quote tailored to your facility's facility's specific requirements. Our team is available to answer questions, provide detailed provide detailed specifications, and guide you through selecting the optimal configuration configuration for your needs.